



FEDERATION FOR CHILDREN
WITH SPECIAL NEEDS

ADDITIONAL MCAS INFORMATION

UNIVERSAL ACCESSIBILITY FEATURES (UFs)

from Accessibility and Accommodations Manual for the Spring 2018 MCAS Grades 3–8 Tests
Massachusetts Department of Elementary and Secondary Education

#	Computer-Based Testing	Paper-Based Testing
UF1	Highlight tool	Highlighter (Used in test booklets, not answer booklets, by students in grades 4–8; colored pencils may be used by students in grade 3. See <i>Principal's Administration Manual</i> for details)
UF2 (PNP)	Alternative background and font color (Color contrast); The student can select a color combination for text and background. <div> Contrast Settings <ul style="list-style-type: none"> <input checked="" type="radio"/> Black on White (Default) <input type="radio"/> Black on Cream <input type="radio"/> Black on Light Blue <input type="radio"/> Black on Light Magenta <input type="radio"/> White on Black <input type="radio"/> Yellow on Blue <input type="radio"/> Gray on Green </div>	Colored overlays or tinted lens(es)
UF3	Magnifier or Zoom tool (Magnifier tool enlarges part of the screen; Zoom tool enlarges or reduces entire screen by pressing Ctrl + or Ctrl -)	Magnification tool or device/low-vision aid
UF4	Line reader tool (Masks text so only part of the text can be viewed at one time)	Tracking device , such as a straight edge or similar tool

UNIVERSAL ACCESSIBILITY FEATURES (UFs), continued

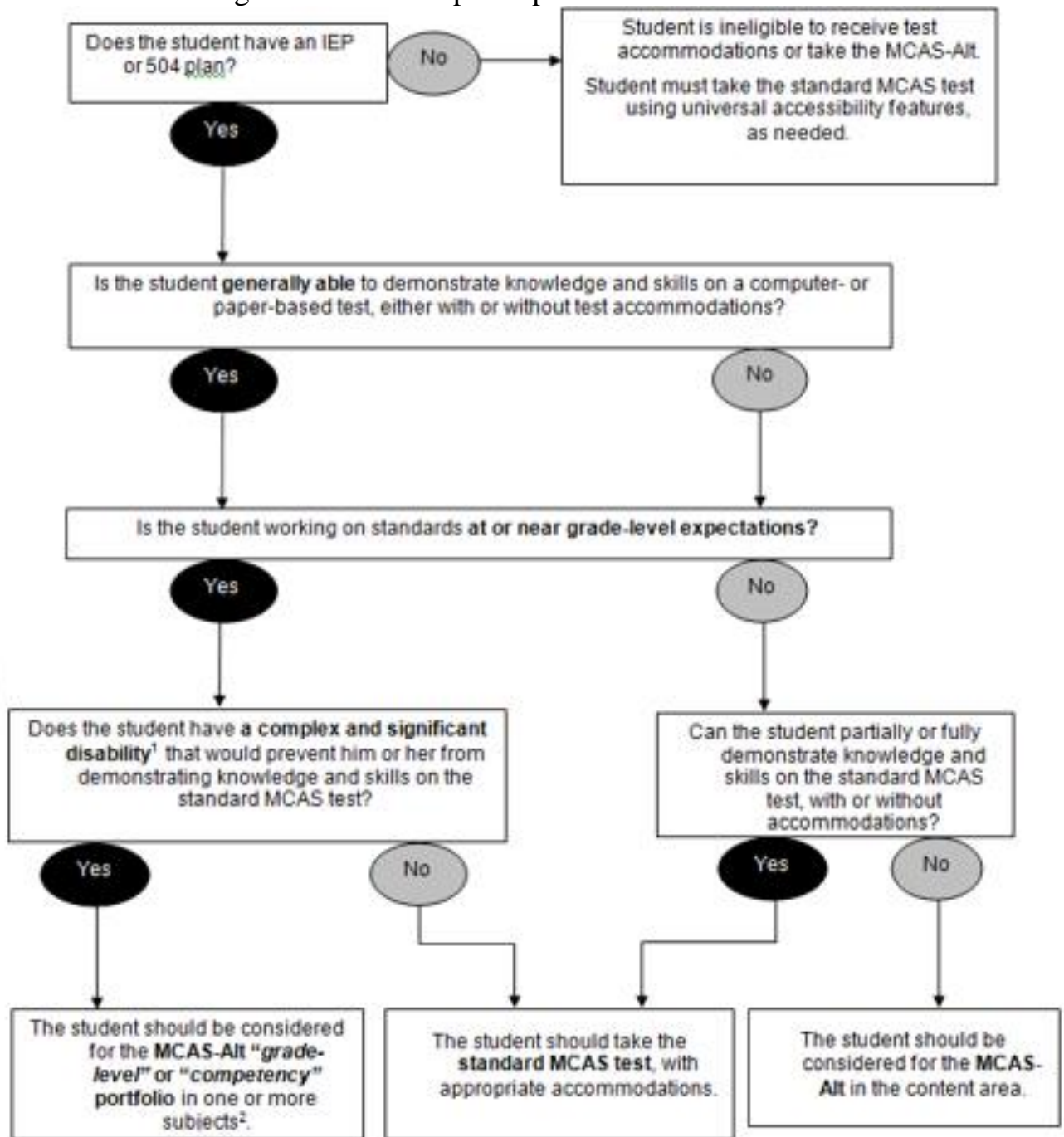
#	Computer-Based Testing	Paper-Based Testing
UF5 (PNP)	Answer masking (Student selects which answer choices will be shown on the screen)	Mask text or answer(s) using a blank card or cutout
UF6	Answer eliminator (Student marks an “X” through each answer option he or she believes is incorrect)	Use a pencil to eliminate answer choices in test booklet (not for grade 3 tests)
UF7	Item flag/bookmark	Use a blank place marker to mark a question for later review
UF8	Audio aids (e.g., amplification device, noise canceling headphones, or white noise machine. Note: a smartphone may not be used)	Audio aids (e.g., amplification device, noise canceling headphones, or white noise machine, provided a smart phone is not used)
UF9	Notepad for notes or calculations	Scratch paper (required for all students)
UF10	Test administrator reads aloud (or signs , in the case of a student who is Deaf or Hard-of-Hearing) selected words on the Mathematics and/or Science and Technology/Engineering (STE) tests, as requested by the student. The student will point to the word or phrase that he or she needs read aloud or signed. Test administrator quietly reads aloud or signs the selected word to the student. Students using this feature may be tested alongside other students in groups of any size.	
UF11	Test administrator redirects student’s attention to the test without coaching or assisting the student to answer any questions (e.g., test administrator reminds student to stay focused; it is not permissible to say, “Add more to your response” or “Make sure to answer all questions.”)	
UF12	Read aloud, repeat, or clarify general test administration directions to student, as needed.	

DESIGNATED ACCESSIBILITY FEATURES (DFs)

from Accessibility and Accommodations Manual for the Spring 2018 MCAS Grades 3–8 Tests
Massachusetts Department of Elementary and Secondary Education

#	Designated Accessibility Feature
DF1	Small group test administration (May include up to a total of 10 students.)
DF2	Individual (one-to-one) test administration (Student must be tested in a separate setting.)
DF3	Frequent brief supervised breaks
DF4	Separate or alternate test location
DF5	Seating in a specific area of the testing room, including the use of a study carrel
DF6	Adaptive or specialized furniture (seating, desk, or lighting)
DF7	Noise buffer or noise-canceling earmuffs/headphones (Music or other recordings may not be played on headphones worn during testing.)
DF8	Familiar test administrator
DF9	Student reads test aloud to self. Student must be tested in a separate setting, unless a low-volume device such as a "Whisperphone" is used.
DF10	Specific time of day
DF11	"Stop Testing" policy: If the student does not appear to be responding to test questions after a period of 15–20 minutes, the test administrator may ask if the student is finished. If so, the test administrator may collect the student's test materials and the student can either sit quietly or be excused from the test setting.

DESE Decision-Making tool for MCAS participation



From the Massachusetts Department of Elementary and Secondary Education www.doe.mass.edu/mcas/alt/essa/DecisionTool.docx